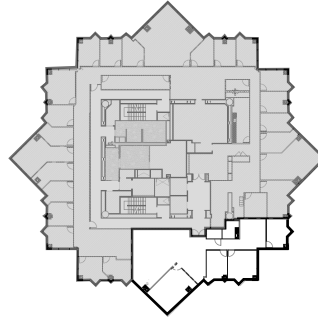


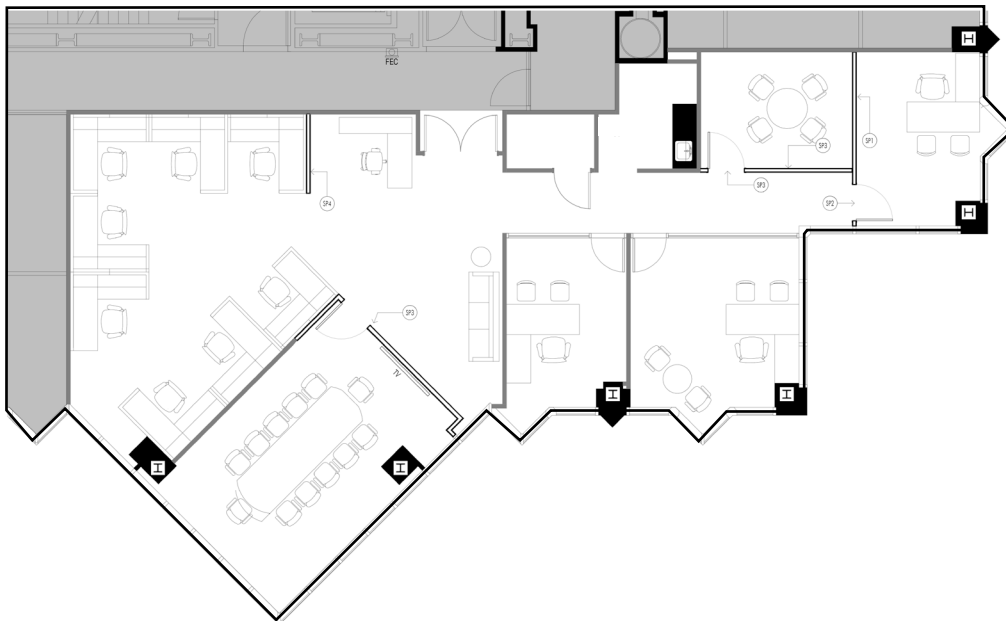
100 FIRST

SUITE 2350

TAKE THE VIRTUAL TOUR



SUITE LOCATION



* FURNITURE NOT INCLUDED

SALESFORCE PARK



NORTH



* Not actual suite

ELEVATOR IDENTITY WITH VIEWS

- Suite 2350: 2,993 Square Feet
- Dramatic Southern Views of Salesforce Park and San Francisco Bay
- Glass front doors with elevator identity
- High quality finishes throughout
- Reception area, 4 offices, 1 conference room, kitchen, and open area for 8 workstations

CBRE

KEN CHURICH +1 415 291 1728 ken.churich@cbre.com

MADISON DUTRA +1 415 772 0380 madison.dutra@cbre.com